

RALPH RUCCI

FALL / WINTER 2023 - 2024 HAUTE COUTURE COLLECTION

CREATIVE DIRECTOR

RALPH RUCCI

FASHION ILLUSTRATOR

BIL DONOVAN

PHOTOGRAPHY AND PRODUCTION

26FIVE

GRAPHICS

ALPINA PRINTING & GRAPHICS

ATELIER ASSISTANTS

JACEK RATKOWSKI AND ROSINA RUCCI

ASSISTANT

MAXWELL SOBIESKI

1

Fall/Winter Haute Couture 2023-2024

RALPH RUCCI

Final Dress: Gueson
Heavy - sponge silk crepe
with white pique collar
and 3/4 sleeves full
cuffs.

* - Concave/Convex insets
in Tencel silk/wool
crepe back satin
Aut. #
Color: Cerise
#



1

2

Fall/Winter 2023-2024 Haute Couture
RALPH RUCCI

- Wool + Silk

w/ Black Trapunto

leather

- Pagoda Jacket

+ Trapunto leather

Skin

02

SHOW

2



3

Fall / Winter 2023 - 2024
RALPH RUCCI Haute Couture
 Tunic + CP Seam front -
 D.F. NOOL CREPE WITH
 PAGODA Neckline + Sleeves
 - Patch pockets.
 - INSIDE PINTUCKED
 "SHADOWS" -
 TONI - #19055:
 SILK CREPE BACK
 SATIN:
 Color: #126
 LAVENDER



3



BLACK DOUBLE-FACED CREPE PAGODA NECK TUNIC AND NARROW PANTS
 WITH LAVENDER SILK CREPE-BACK SATIN PINTUCKED SHADOWS.

4

Fall / Winter 2023 - 2024 Haute Couture
RALPH RUGGI *petrol Duchess Satin Parka*
 with Black Fox Trim
 - Tunic + Pant: Black Silk
 Georgette with Black
 Woven Apache / Basket
 Embroidery



4



PETROL SILK DUCHESS SATIN PARKA WITH BLACK FOX TRIM, BLACK SILK GEORGETTE TUNIC
 AND PANT WITH BASKET-EMBROIDERED DISKS.

5

Fall/Winter 2023-2024 HAUTE COUTURE
RALPH RUCCI

CABAN :

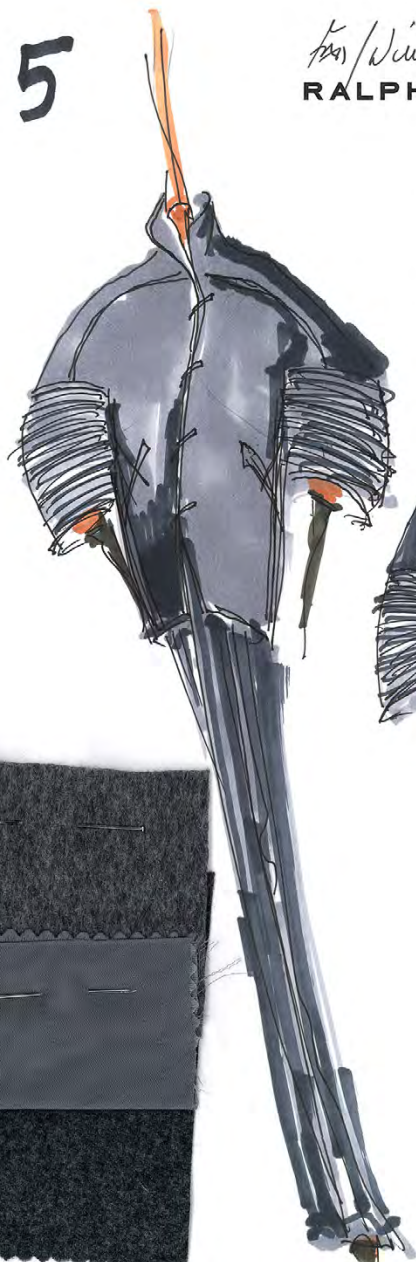
-CHARCOAL OF CASHMERE
WITH JANE GRAY ROCKESS
SATIN TRAPUNTO

1.) CASHMERE : PRACENZA
#7809 / W 20 - Color #1
CHARCOAL

2.) SATIN : TALEN
Art # 02569
Color Charcoal

3.) PANTS :

PRACENZA
Article #50808/W2
Color : #7 :
Jane Gray



5

6

Fall/Winter 2023 - 2024 Haute Couture

RALPH RUCCI

* - Pearl Gray Pearl Gray Cashmere
 Flannel Jacket with
 ELLIPTICAL SUSPENSIONS
 - Pearl Gray Wool/Cashmere
 Tapered Pants.

NOTE

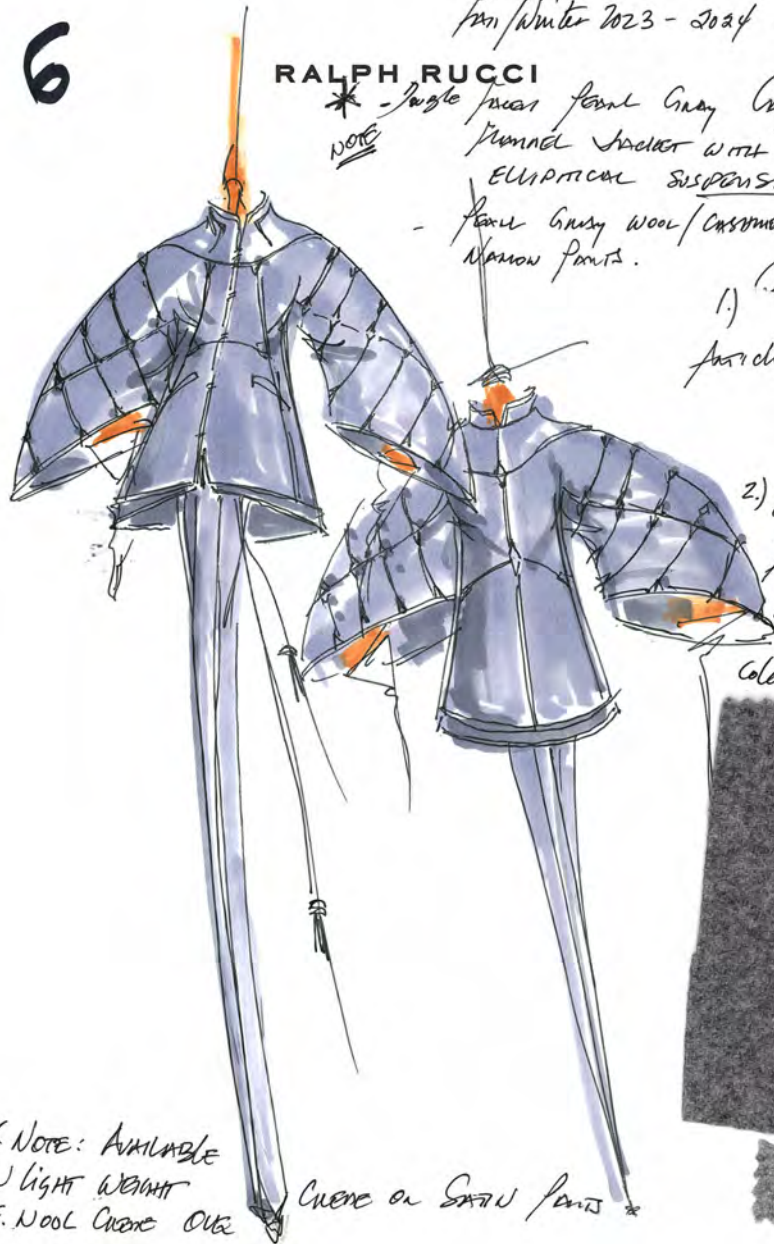
1) Colombo

Article # 15163/10/
217

2) Firenze
Pant

Article # 20808.W20

Color # 5



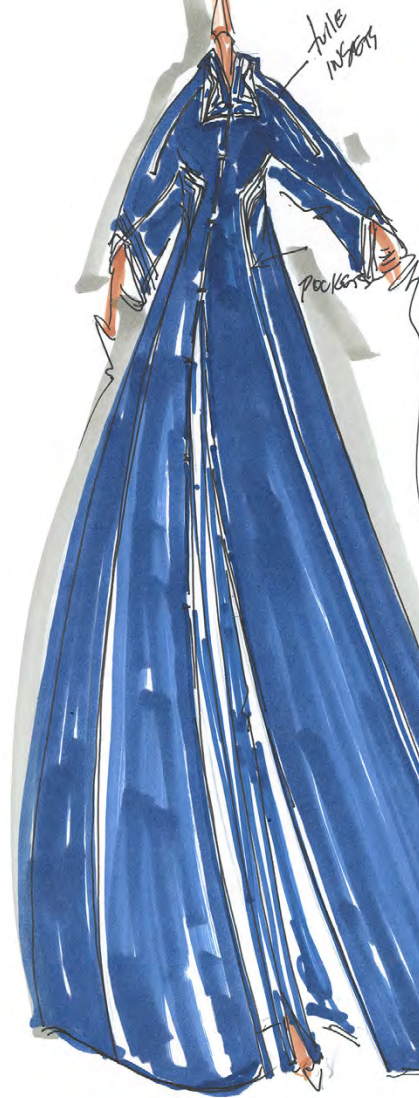
* NOTE: AVAILABLE
 IN LIGHT WEIGHT
 DF. WOOL CREME OUT
 CREME OR SPAN PANTS *



6

7

Fall/Winter 2023-2024 Haute Couture
RALPH RUCCI Navy Dalai Lama of
Pant



a) JF (Crepe) : Wool or Silk
Renaissance
b) JF (Crepe) : Pant
Renaissance # 2734/1/2880
→ Ans. # 1525/6/2884



Navy Satin
Vibrations -
Tasli
Ans. # 02569
Color # 917

7



NAVY CREPE DALAI LAMA LONG JACKET WITH MATCHING PANT
AND NAVY SATIN VIBRATIONS ON TULLE.

8

Fall/Winter 2023-2024 Haute Couture
RALPH RUCCI
- Pearl Gray "Colombo"

DF Cashmere
Lined in Classic Gray/Black
Chinchilla
Grade # 75/63/10 - 1 217

Tunic + pants:
Piacenza:
Cashmere + wool
Art.
20608.
.W2

Color #5 -
light Gray



8

PEARL GRAY DOUBLE-FACED CASHMERE COCOON COAT LINED IN GRAY/BLACK CHINCHILLA,
OVER PEARL GRAY FLANNEL TUNIC AND NARROW PANT.

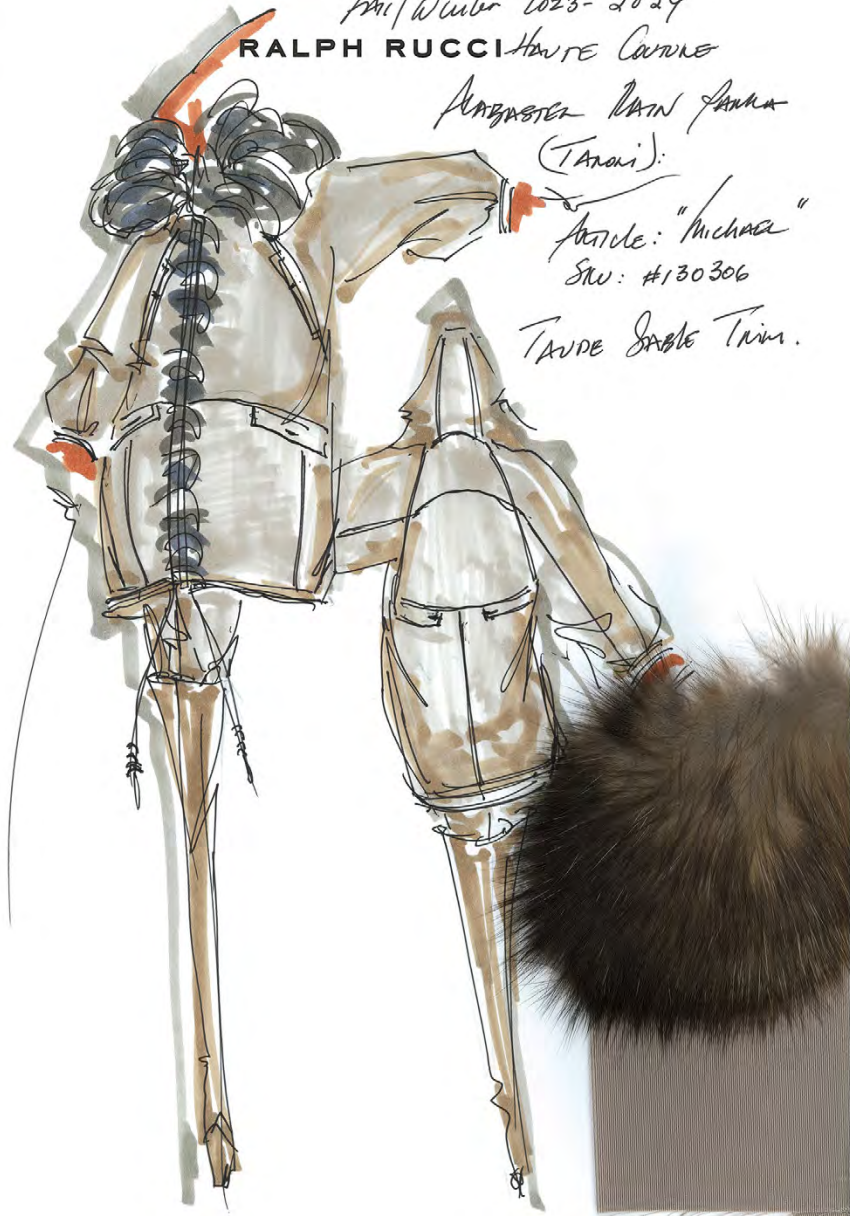
9

Fall/Winter 2023-2024
RALPH RUCCI Haute Couture

Alabaster Rain Parka
(Tanari):

Article: "Michaëla"
SKU: #130306

Taupe Sable Trim.



9



10

Fall / Winter 2023 - 2024 Haute Couture
RALPH RUCCI
FORM LOT CASHMERE + WOOL PEA COAT
"MICHAEL" SKO #214886

- MID GRAY Flannel Pants:
FRACENZA: Art. #20808/W30
Color #6 -
MID GRAY

- Silver Fox
GOLF + NECK



10



APRICOT DOUBLE-FACED CASHMERE PEA COAT
WITH MID GRAY FLANNEL PANT, SILVER FOX "PUFF BALLS" SCARF.

11

RALPH RUCCI

Fall / Winter 2023 - 2024 Haute Couture

Coat: Deep Terra Cotta Cashmere D.F.

Customer: Madonna

Article # 1525/2/0652

52

with Trapunto front +

Braided panels:

Taroni

D.F. Duchess

Article # 02569

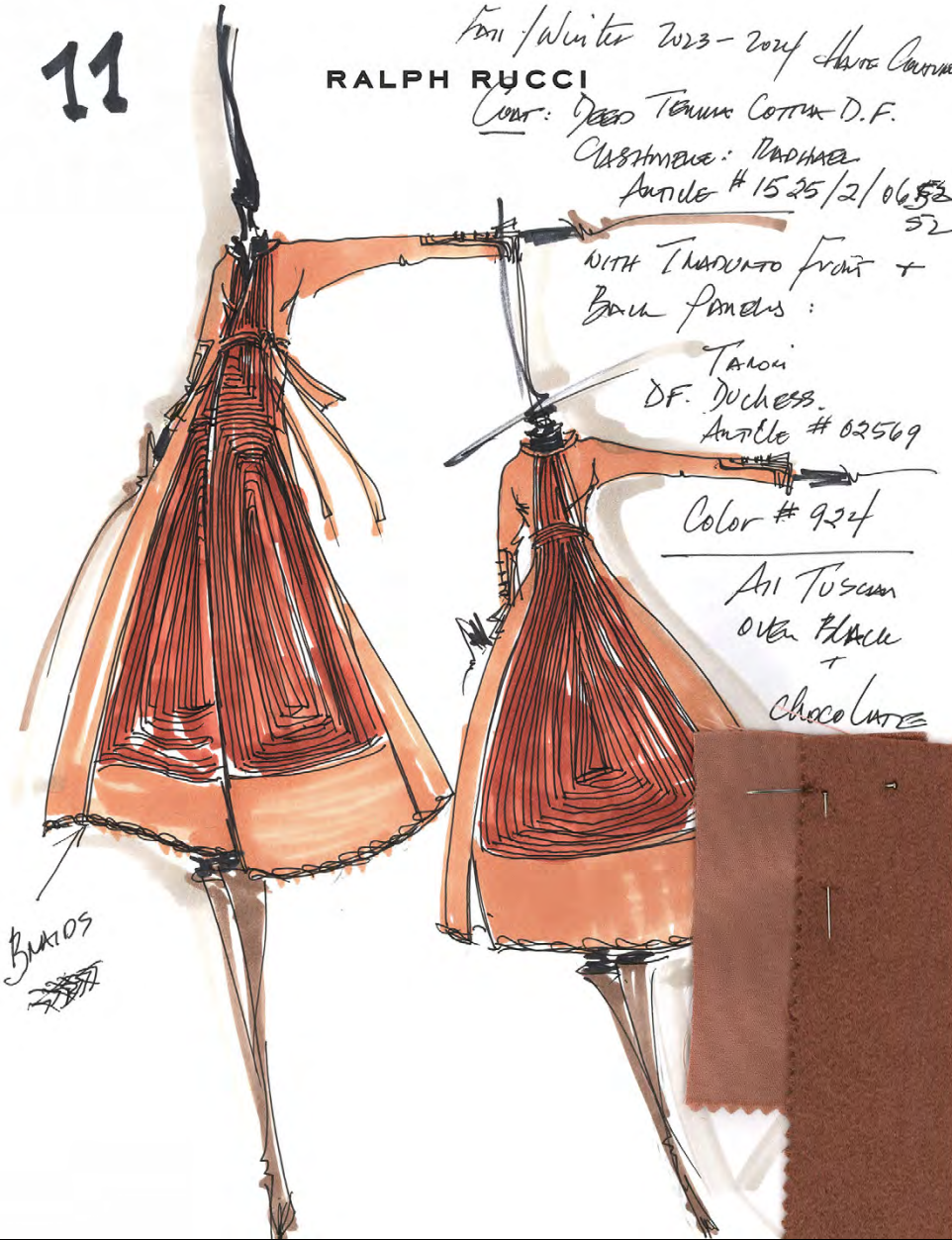
Color # 924

All Tuscan

over black

+

chocolate



Braided

11



12

RALPH RUCCI

Fall/Winter 2023-2024 Haute Couture

CHESTNUT/AUBERGINE
DOUBLE FACED CASHMERE
COAT - JENNYFELINE FACE

SIACENZA
Article
#8771.50

Color:
#371

All JEWELS
IN SET
W/ TARONI

Duchess:
Article # 2569
Color # 145

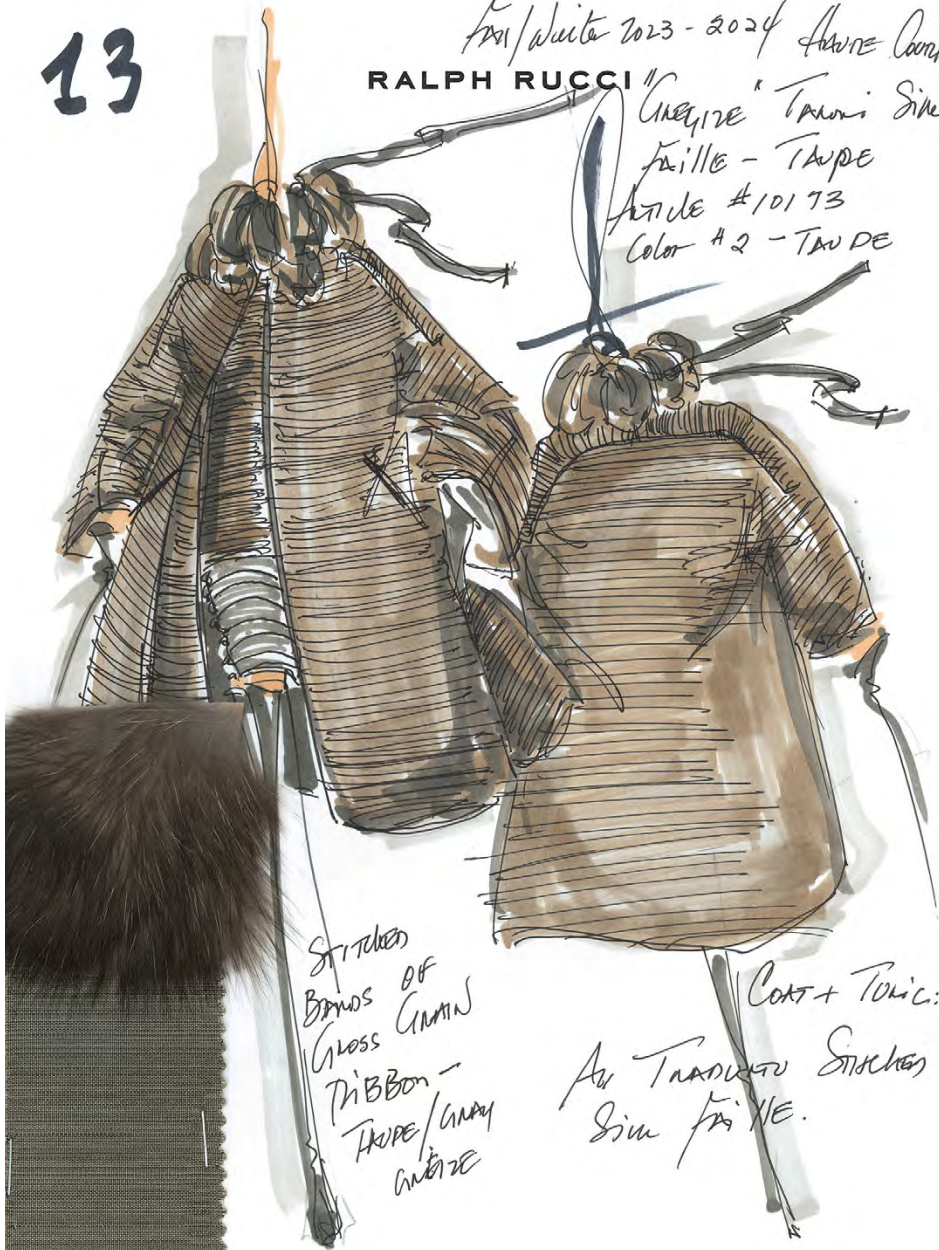


12

13

Fall/Winter 2023 - 2024 Haute Couture
RALPH RUCCI

Greige Taroni Silk
Faille - Taupe
Article #10173
Color #2 - Taupe



13



14

Fall/Winter 2023-2024 Haute Couture

RALPH RUCCI

Petrol Duchess Satin
 - Coat w/
 Pintucking + Embroidered
 Fringe tassels. Coat
 - Over - Matte Petrol Sequins
 - Front Chestnut Apron
 w/ Long Silk Chiffon
 Art. # 17073

Color -
130



14



PETROL DUCHESS SATIN TUBE COAT WITH PINTUCKED TORSO,
 EMBROIDERED FRINGED TASSELS, MATTE PETROL SEQUIN PANTS,
 PETROL LONG SILK CHIFFON APRON.

15

Fall/Winter 2023-2024 Haute Couture
RALPH RUCCI

- Jimmy Choo (Shoes)

Mim 7/8 Cardigan +

Sheer NIK

over

by Anne Sire

Hotel:

Avenue 18751

Color: ... 00

Draw
INSIDE
WITH
SCRIPTED
MESSAGES



15

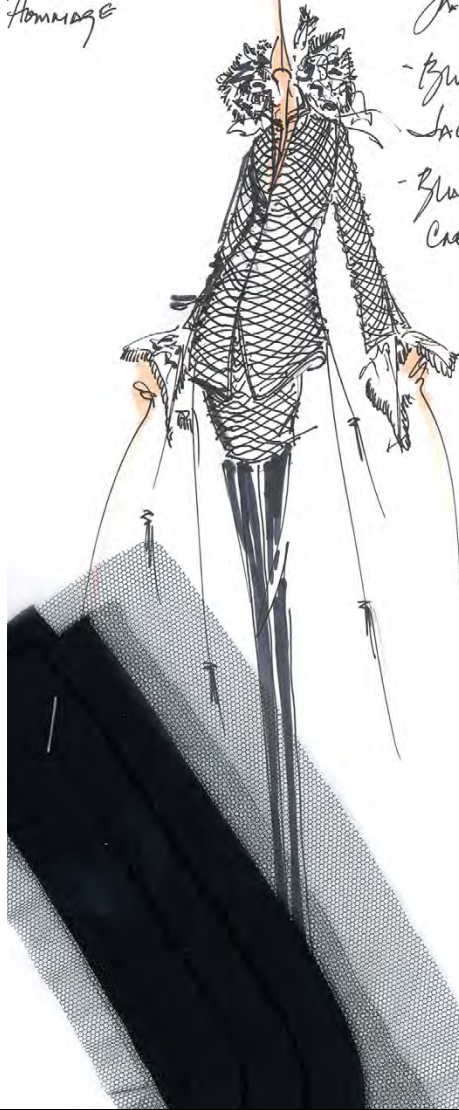


BLACK CORDUROY SHEARED MINK CARDIGAN WITH HANDWRITTEN MESSAGES WITHIN,
AND TUNIC OVER BLACK SILK PANNÉ VELVET MID-CALF SKIRT.

* 16
 JAVEL TCHELITCHEW
 HOMMAGE

Fall/Winter 2023 - 2024
 HAUTE COUTURE
RALPH RUCCI

- Javel of Wool Crepe
- OR
- Javel Silk ^{OR} ~~or~~ VIBRATIONS ↓
- JACKET + PANTS - ON TULLE
- Javel Crepe (MATTE) ^{SILK} OR
- Crepe Javel ^{SILK} or Wool Crepe
- Javel tulle & chiffon
- Tattered blouse



← Side ties.

* Based On

ARTIST:
 JAVEL TCHELITCHEW

RUSSIAN BORN
 SURREALIST -
 GENIUS / GAY

DIED ON MY
 BIRTHDAY: 7.31.1967

BURIED:
 PÈRE LACHAISE PARIS
 CAMELON



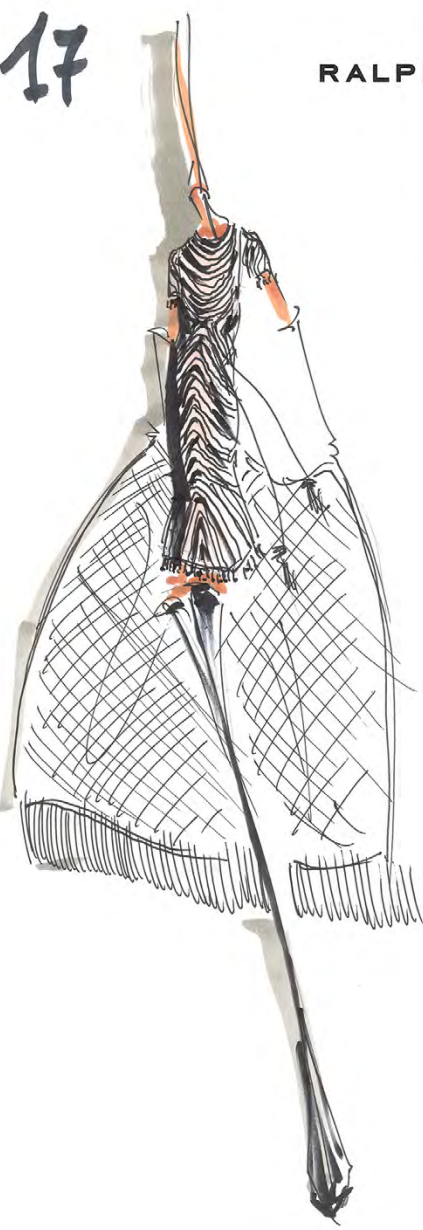
16

17

Fall / Winter 2023 - 2024
RALPH RUCCI Haute Couture

Blouse of Ribbon or Taffeta
? Chiffon or Satin
* Concentric - Nylon
Antoine Gessen on
"Javel Tcheletchev"

17



BLACK SATIN-FACED SILK/WOOL DRESS WITH CONCAVE/CONVEX VIBRATIONS,
ALL TUBES ENDING AT THE HEM AND THE SHORT SLEEVE IN TUBED FRINGE.

18

Fall/Winter 2023-2024 Haute Couture
RALPH RUCCI
- Green Silk Crepe Pant
- Turtle Neck +

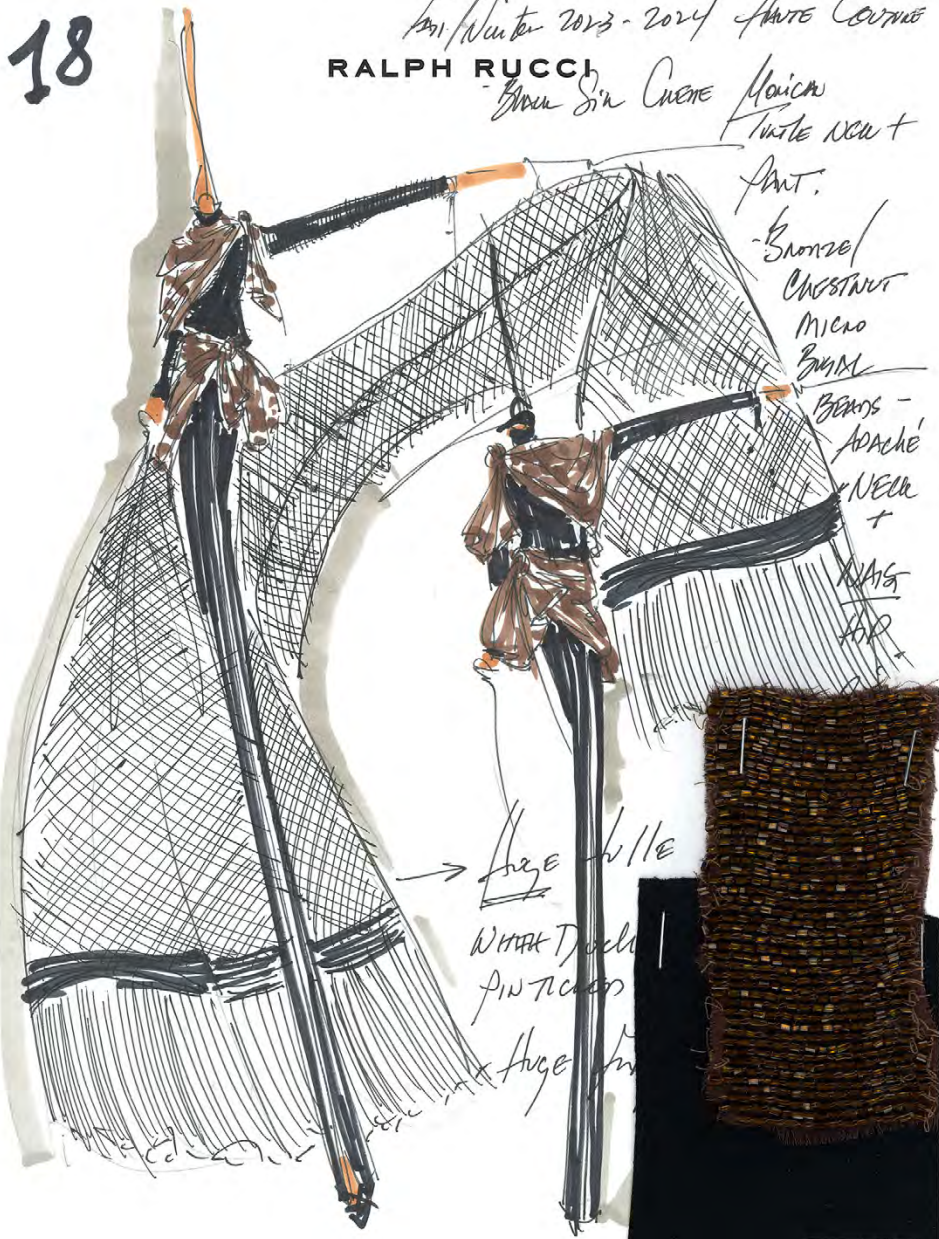
Pant:

- Bronze
Chestnut
Micro
Bugle

Beams -
Apache
Neck
+

Wings
for

→ Huge tulle
with Duchesse
satin fringe
+ huge



18



BLACK SILK CREPE TURTLENECK AND PANT,
VRELAND APACHE CHESTNUT MICRO BUGLE BEADED NECK AND HIP SCARVES.
HUGE BLACK TULLE STOLE WITH SHREDDED DUCHESS SATIN FRINGE.

19

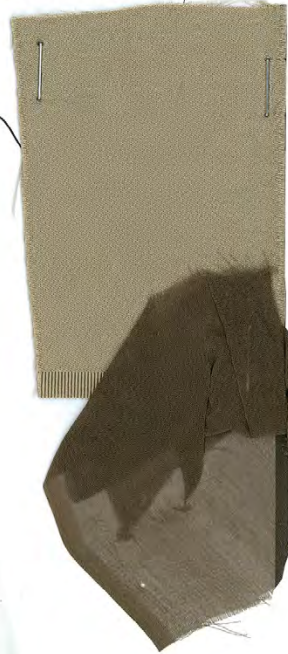
Fall/Winter 2023-2024 Haute Couture
RALPH RUCCI

"Suspension Jacket + Skirt
in "Biscuit" Duchess Satin

Taxon: Art. # 02569,
Color # 150

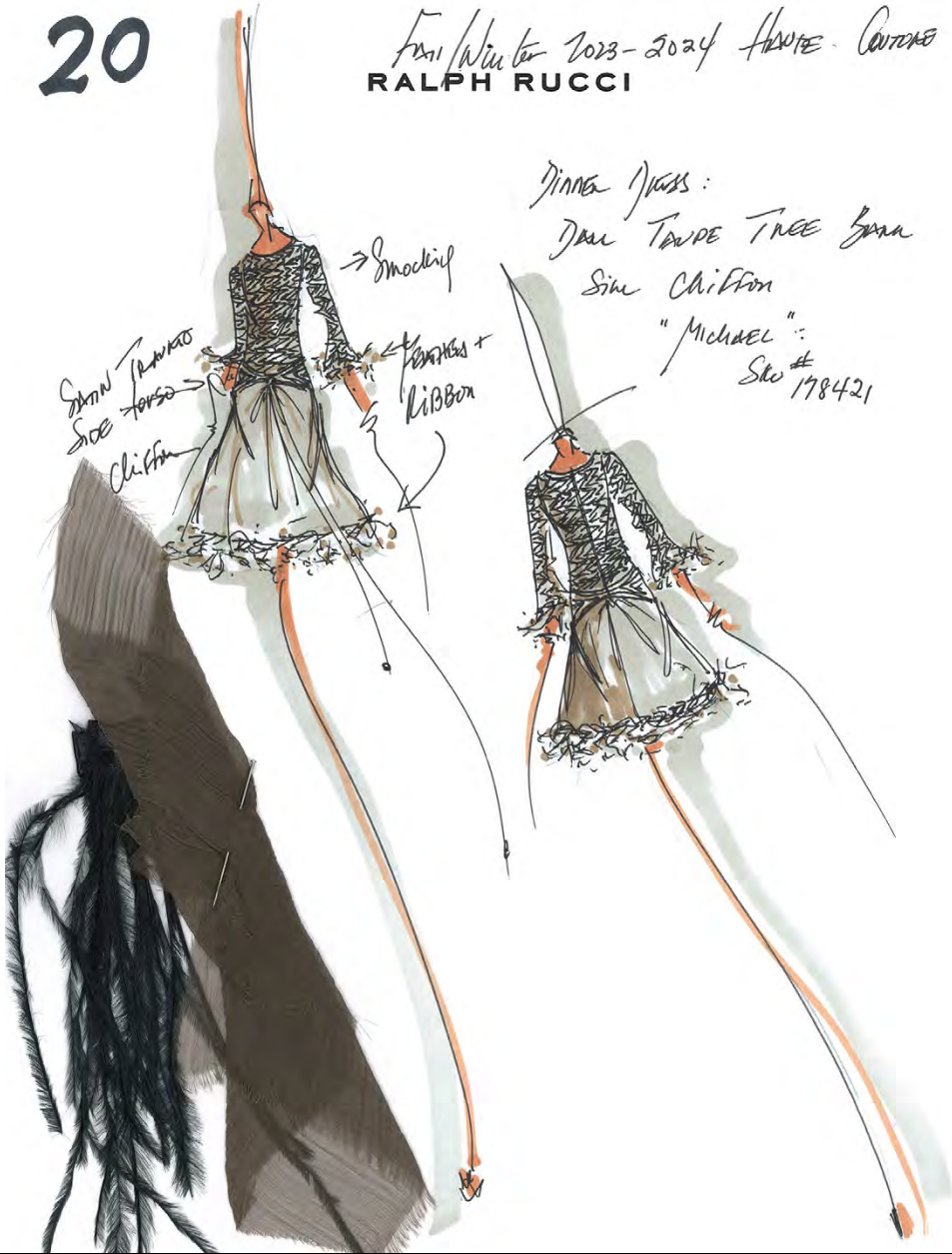
Blouse - chiffon bias wrap
+ Scarf:

"Michael"
SKU# 180196



19





Dinner Dress:
Taupe Tree Bark
Silk Chiffon
"Michael":
Sku # 178421



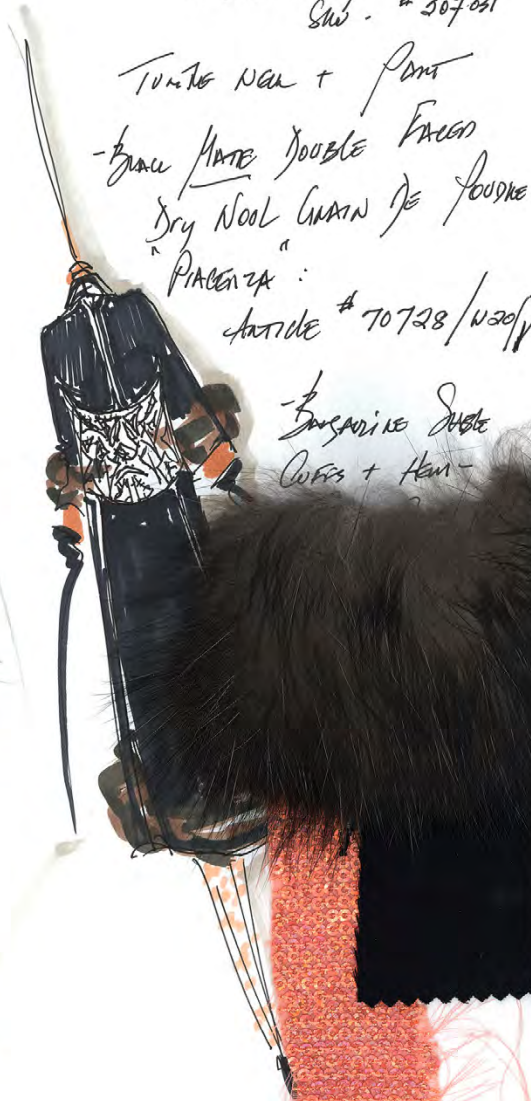
TAUPE TREE-BARK SILK CHIFFON DRESS WITH HAND-SMOCKED TORSO,
WITH EMBROIDERED FEATHER AND TATTERED CHIFFON RIBBON TRIM.

21

Fall / Winter 2023 - 2024 HAUTE COUTURE
RALPH RUCCI
"Apricot Hologram Sequins"
On Clifton - "Michelle"
Sku. # 207021

TUNIC NEAR + PANTS
- from MATTE DOUBLE FACED
Dry Wool LAMIN JE FODDRE
"PACENZA"
Airtide # 70728 / W30/F

BARGUZIN SABLE
CUFFS + HEM -



21

APRICOT HOLOGRAM MICRO SEQUINS SWEATER AND PANT,
BLACK DOUBLE-FACED MATTE DRY WOOL/SILK COAT
WITH BARGUZIN SABLE CUFFS AND HEM SUSPENSION TORSO IN SELF.

22

Fall / Winter 2023 - 2024
RALPH RUCCI Haute Couture

Taupe Barguzin Sable

Cocoon

- White Hammered Silk Blouse

with Embroidery

- White Hammered Silk

High Waisted
Pants.



22



TAUPE BARGUZIN SABLE COCOON WITH CIRCULARLY WORKED PELTS,
WHITE TREE-BARK SILK EMBROIDERED BLOUSE AND SOLID PANTS.

23

Fall/Winter 2023-2024 Haute Couture

RALPH RUCCI

Wear in Multi-Form Gray/Greige
Familiar and upside down cool
textures. With tattered and
fringed bits of tulle and chiffon.

- Sew and skirt in silver cross
cut bugle beads.

- Smokey tummy
Crepe back
Satin pants

Talon: Art. # 17341P/
DE

Michael:
SKU# 231156
DEEP TAUC



23



DEEP NECKLINE TUNIC IN MULTI-GRAY/GREIGE FEATHERS
AND TATTERED CHIFFON SASH AND SKIRT IN PAVÉ SILVER MICRO BUGLE BEADING,
SMOKEY GRAY CREPE-BACK SATIN PANTS.

FALL / WINTER 2023 - 2024
HAUTE COUTURE COLLECTION

24

Fall / Winter 2023 - 2024

RALPH RUCCI Haute Couture

Notes:

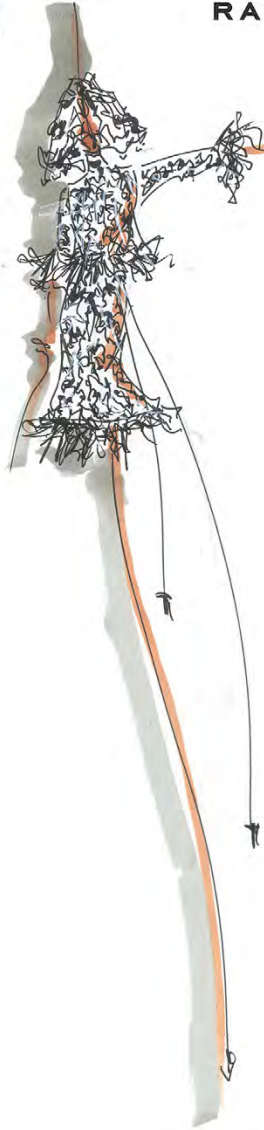
- From MARQUISSE BASE

- MICHAEL - SKO 9254426

- LINDSEY: SW : #9246551

- ^{PORT} PAUL OSTRICH AT
CUTS, MINUTE, VAN

- KILLING POINT
PORCUPINE QUILLS
EMBROIDERED.



24



BLACK DRESS – SILK MARQUISSETTE BASE, EMBROIDERED WITH APPLIED BLACK LACE,
OVER EMBROIDERED WITH BLACK BURNT OSTRICH FEATHERS AND NATURAL PORCUPINE QUILLS.
BLACK LACE MANTILLA.

25

Fall Winter 2023 - 2024
RALPH RUCCI Haute Couture

Black Tulle of
Scratch Micro Bugle Beads
Saxa embroidery + fringe
Tunic + Skirt

"Tux."
"Michele"
SKU: #7483272

25



BLACK SILK CREPE AND TULLE TUNIC
AND SKIRT WITH SCRATCH MICRO CHESTNUT BUGLE BEADING
DRIPPING INTO FRINGE.

- Green "Boullone" tulle w/
hand gathering and knots
over green / gold sequins.

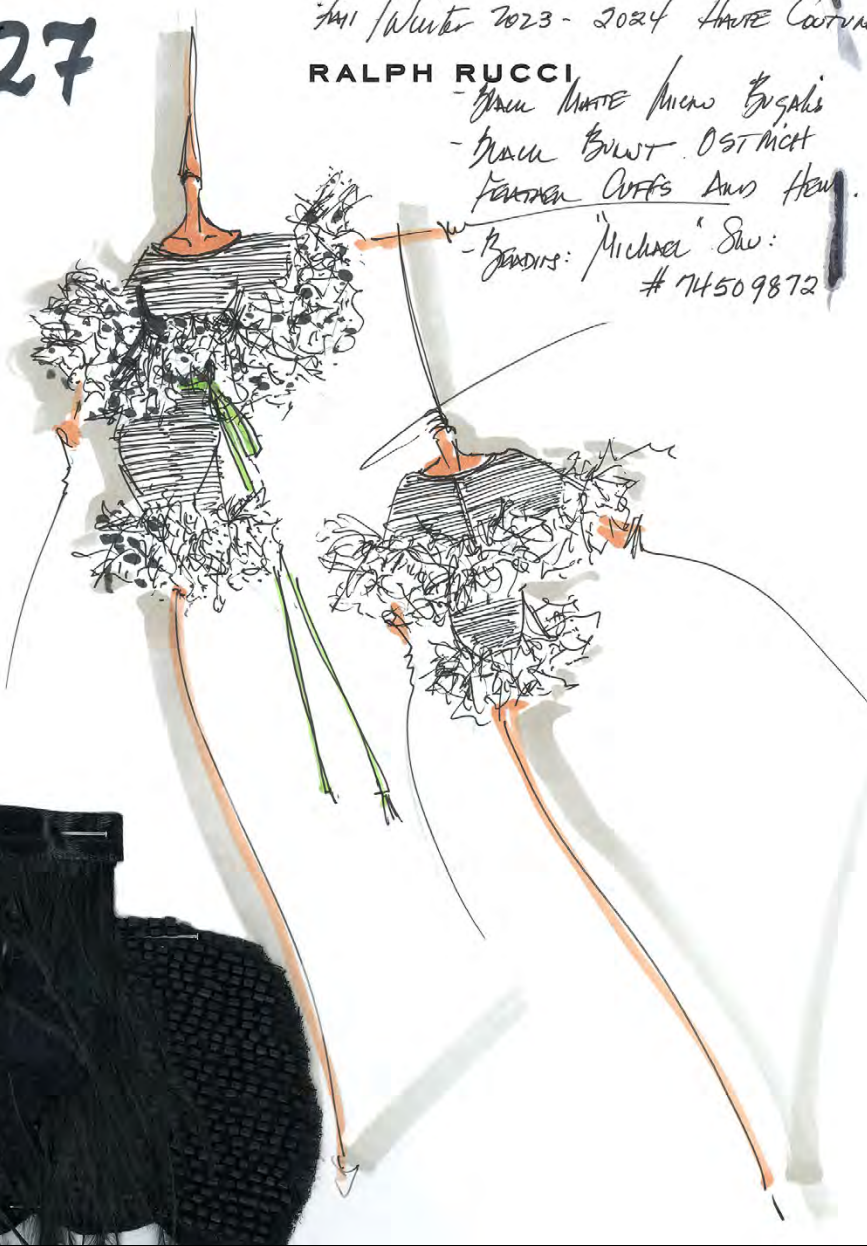


27

Fall / Winter 2023 - 2024 Haute Couture

RALPH RUCCI

- Black Matte Micro Bugle Beads
- Black Burnt Ostrich
- Parrot Satin Cuffs And Hem.
- Buttons: "Michael" Sew: #74509872



27



28

Fall / Winter 2023 - 2024 Haute Couture

RALPH RUCCI

Empress V Tunic

Black Duchess Skirt # 02569

Color # 204

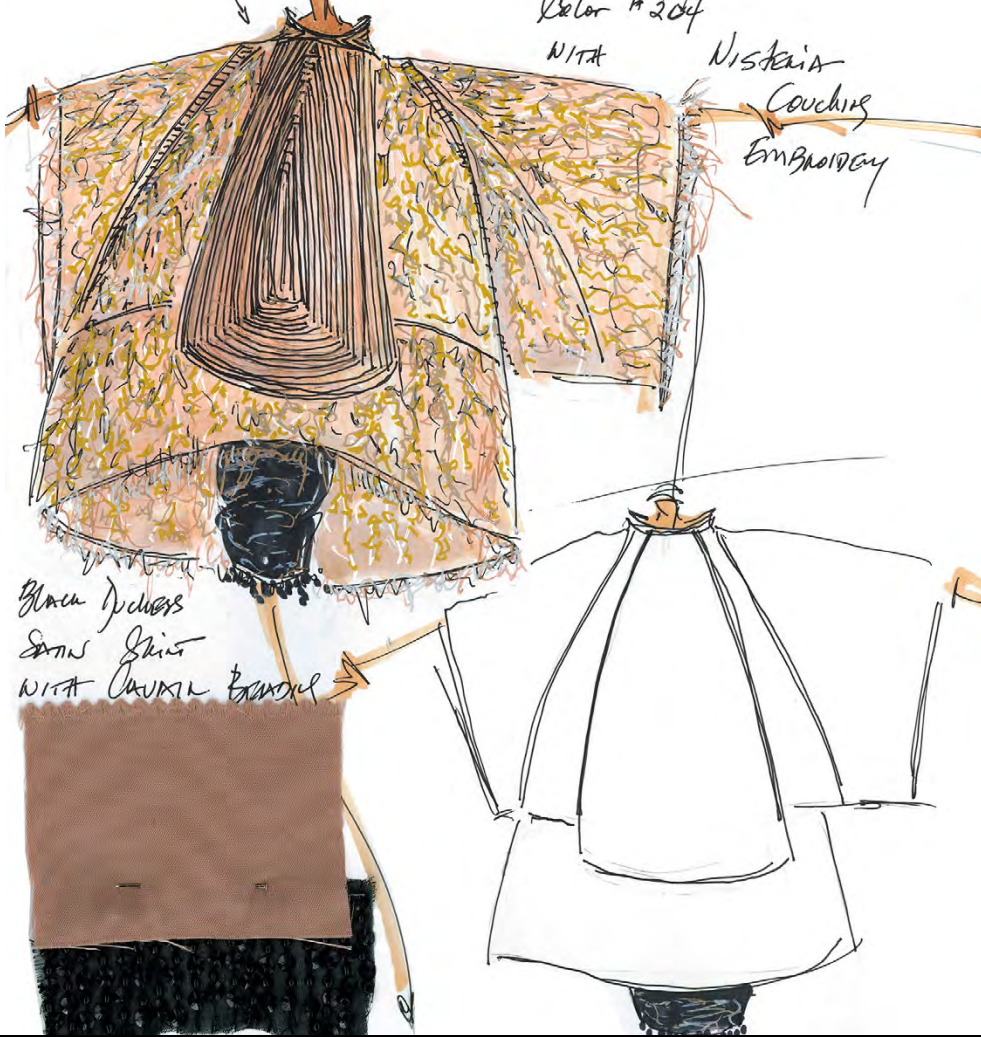
WITH

Nistaria

Couching

Embroidery

Tadpole



Black Duchess Skirt with Caviar Beads

28



29

Fall/Winter 2023-2024 HAUTE COUTURE
RALPH RUCCI

Crepe Back Satin
Wool Shawl Gown
Wool Gown IN
Tikoni - Art #17055
"Cerise": Color 254
Silver Bugle Beads
On Satin



29

30

Fall / Winter 2023 - 2024 Haute
Couture
RALPH RUCCHI - "Sanguine"

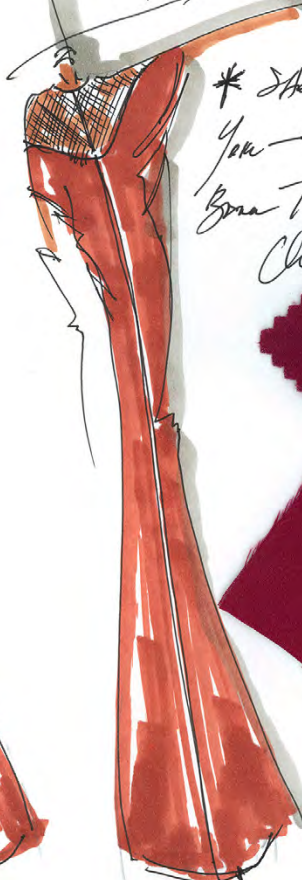
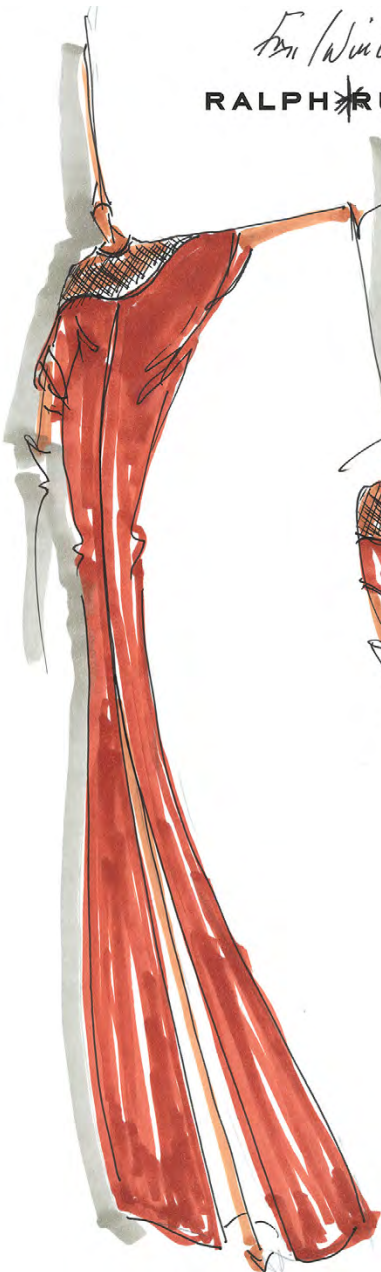
Bias Cut Crepe Back Satin
Tulle

1.) #17333 - Color #157

2.) #17055 - Silk/Wool
Color #132

3.) "Michael" - Sew #
(5759)

* Shoulder
Yoke - Tulle
Bare Tulle
Chiffon



30



Tanori

"Cy Twombly"

CAFTAN —

All Embroidered
with threads.



32

Fall/Winter 2023-2024
RALPH RUCCI Haute Couture

- Iced Pink Silk GABARDINE
CROWN - TAILORED ART. # 2570
Color # 56

- Over Black Velvet JONES:
Art. # 1835T
Ph. # 66

Backless

Hand Clean fabric
to see through



32



ICED PINK SILK GABARDINE BACKLESS INFANTA
OVER BLACK VELVET NARROW PANTS.

33

Fall / Winter 2023 - 2024 Haute Couture
RALPH RUCCI

- Acid Green

Silk Panné Velvet

TUBE - Article #17415

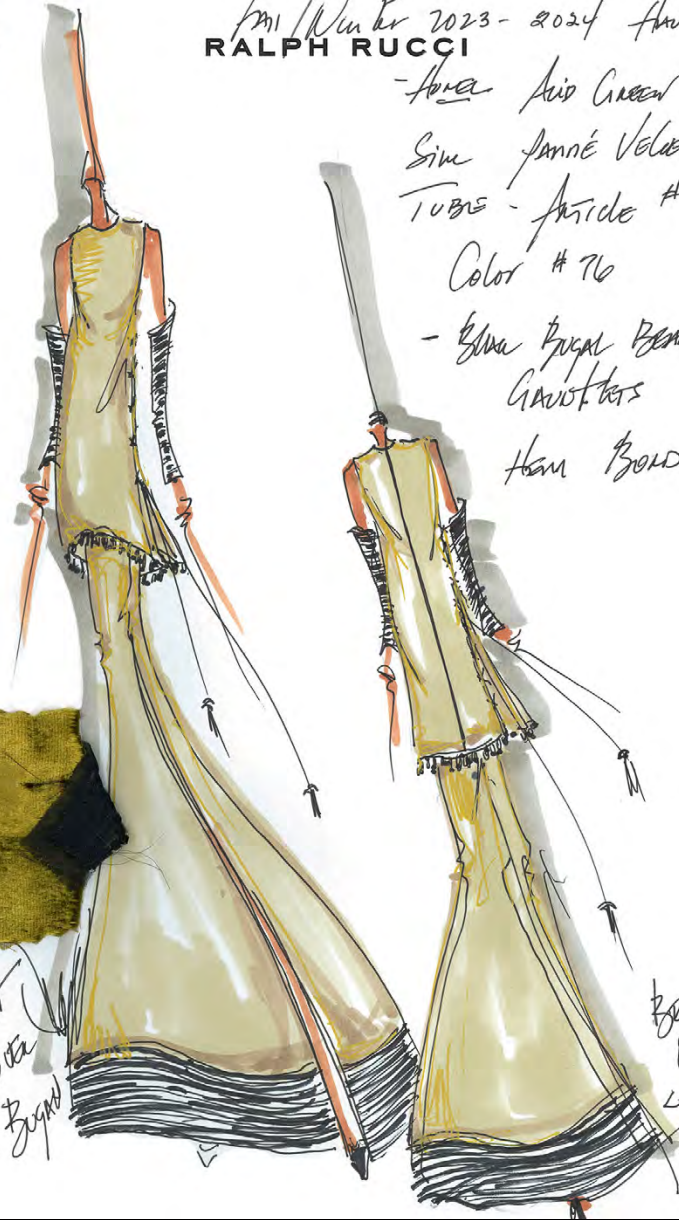
Color #76

- Black Bugle Beads
Gauntlets

Ham Border



Velvet
Flows over
Black Bugle



Beads on
Orange

33



ACID GREEN SILK PANNÉ VELVET TUBE
WITH MICRO BLACK BUGLE BEADED HEMS
AND BLACK GAUNTLETS.

FALL / WINTER 2023 - 2024
HAUTE COUTURE COLLECTION

34

Fall / Winter 2023 - 2024 Haute Couture
RALPH RUCCI
Black bugle beaded fringe on
panels of black "fucked"
Sim Georgette.

Smoky lavender crepe.
Back satin bias
panels of fringe



34



CARDIGAN IN FRINGED BLACK BUGLE BEADED
OVER LAVENDER CREPE-BACK SATIN PANTS.

35

Fall / Winter 2023 - 2024 Haute Couture.
RALPH RUCCI
① Evening Coat: TAILORED
GREEN SILK MOIRE: Art. #
0316114
NERO

② Evening Dress
SATIN TUBE WITH Tulle
Body frames

Art. # 17436P

③ Coat lining in
CHAMPAGNE SILK
SATIN DAMASK
OUTSIDE LINES

Quoted:

"fuelle"

89650:
DANQUIN,
DAMES

Color
004:

ABSINTHE



35

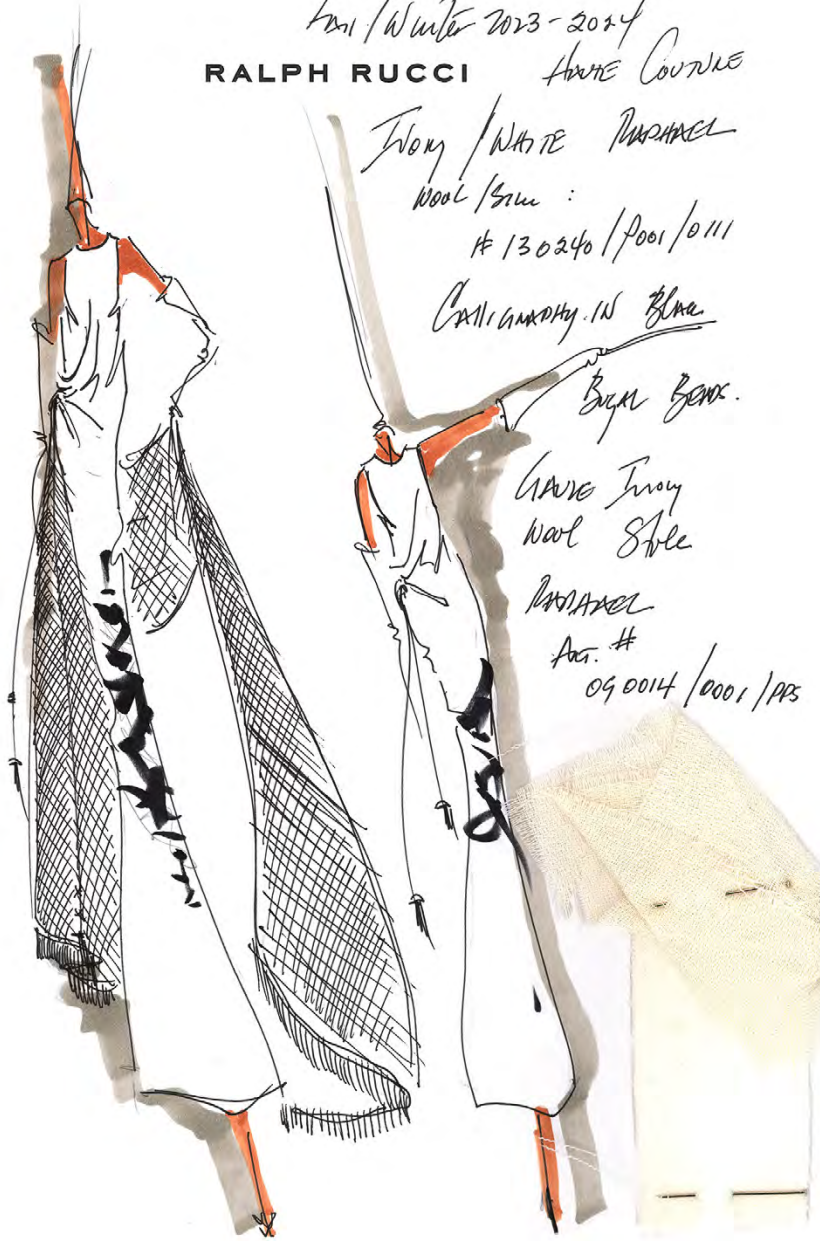


Fall / Winter 2023 - 2024
RALPH RUCCI Haute Couture

Ivory / White Pasharel
Wool / Silk :
130240 / 0001 / 0111

Calligraphy in Blue
Bugle Beads.

Gauze Ivory
Wool Stole
Pasharel
Art. #
090014 / 0001 / 005



WHITE DOUBLE-FACED WOOL/SILK HALF BIAS TUBE,
CALLIGRAPHY IN MICRO BUGLE BEAD EMBROIDERY,
WHITE GAUZE CREPE STOLE.

37

Fall / Winter 2023-2024
RALPH RUCCI Haute Couture

THE BRIDE ... PERHAPS ...
WHITE DOUBLE FACED
WOOL/SILK
SIDE BODY PLATES
CLEAR BUBBLE BEAD
BANDS ON TULLE -
NUDE FOR
TRANSPARENCY.
TULLE MANTILLA
DOTTERED WITH
BUBBLES ...



37



THE BRIDE ... PERHAPS ... WHITE DOUBLE-FACED WOOL/SILK TUBE WITH SIDE
"BODY PLATES" IN CLEAR BUBBLE BEADING ON TULLE WITH NUDE CHIFFON BENEATH FOR ILLUSION.
LARGE TULLE MANTILLA WITH SCATTERED CLEAR BUBBLE BEADS AND BACK TRAIN.